



## Participatory Art for society engagement with Ocean and Water (PartArt4OW)



Funded by  
the European Union

Chiara Certomà



DIPARTIMENTO DI METODI E MODELLI  
PER L'ECONOMIA IL TERRITORIO E LA FINANZA  
MEMOTEF

SAPIENZA  
UNIVERSITÀ DI ROMA

HORIZON-MISS-2023-OCEAN-01-11

**Ocean & water and arts: the contribution of creative sectors to Mission Ocean and waters**

Actions for the implementation of the Mission Restore our ocean and waters by 2030

*Coordination and Support Actions*

**Proposals** submitted under this topic **should**:

- links with other Mission activities and the Mission lighthouses' areas and Blue Parks;
- contribute to EU4Ocean Coalition and the new Bauhaus initiative;
- links with Mission Implementation Support Platform.

**Expected Outcome:**

- Stimulate the citizens' interest in and fascination by ocean and waters;
- Boost interest in working in the blue economies, engaging in ocean research and innovation;
- An increase of citizen and stakeholder awareness about the challenges and pressures faced by the ocean and inland waters;
- Mobilisation of artistic communities and creative sectors for the protection and restoration of ocean;
- Connect coastal and maritime communities with their habitats and their ecological, aesthetic and cultural heritage;

# PartArt4OW

## *abstract*

In line with the objectives of “Mission Restore our Ocean and Waters by 2030” and the UN Decade of Ocean Science for Sustainable Development, PartArt4OW aims to

- (1) strengthen the emotional attachment between society and the oceans and waters;
- (2) raise awareness of challenges these face;
- (3) develop a strong transdisciplinary and trans-European network of artistic and creative communities to protect and restore oceans and inland water;
- (4) support policymakers in working towards sustainable ocean and water policies.

To this end, PartArt4OW focuses on participatory art and creative processes on the belief that participation can bring about a deeper engagement of people with the problem of ocean and water health by performing arts themselves.

Building upon the belief that art and the creative sector can contribute to the EU Mission Starfish 2030 priorities, PartArt4Ocean mobilises artists, citizens and other stakeholders in realising 20 multi-stakeholder Participatory Art Initiatives (PAIs).

All modes of artistic expression and synergies with EU-funded projects are welcome. Selected PAIs receive physical resources, human capital (training, experience, mentorship, relationships and feedback) and organisational capital (structure, planning, monitoring, and internal relationships) through a PartArt4OW Accelerator Program.

To support PAIs, PartArt4OW also organises stakeholder engagement and ecosystem-building activities, including Ambassadors Network engaged in mutual learning exercise and the operationalization of ParArt Sailing Lab equipped with sustainable sailing and artistic production facilities on board to visit and connect creative communities engaged in PAIs.

Matchmaking events and PartArt Festivals bootstrap the possibilities of artistic communities and creative sector stakeholders to significantly contribute to citizens' connection with the ocean and the waters.

## PartArt4OW

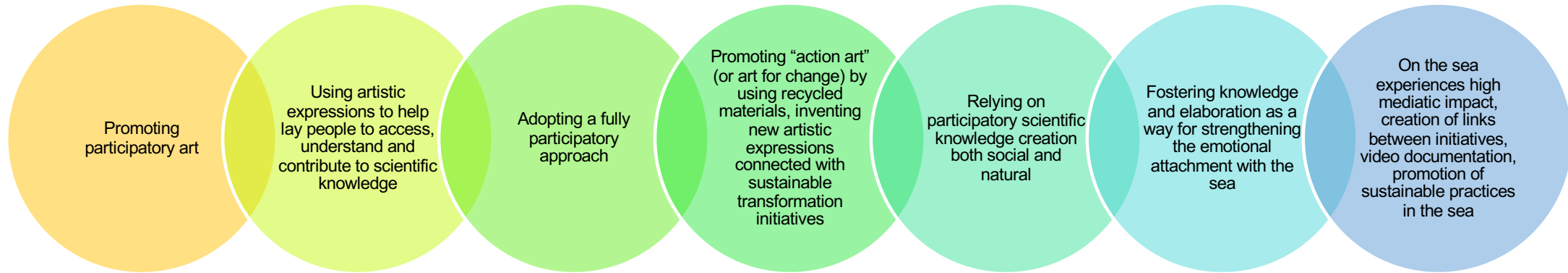
### Partners

1. Università Sapienza Roma (Italy) (participatory research, environmental politics, socio-environmental geography)
2. T6 Ecosystems (Italy) (social innovation, impact assessment)
3. Cyprus Marine and Maritime Institute (Cyprus) (marine literacy and technology)
4. Regenera Network (Spain) (sustainable development)
5. Fundacion Epica La Fura dels Baus (Spain) (performative art)
6. Raw News (Italy) (news production agency)



Role in the PartArt4OW project	
UniTo	Contribution: Coordination, participatory methods support & training, stakeholder engagement and ecosystem building, toolkit development. Leads WP1 and tasks 2.3, 3.4, 4.2 and 4.3 Infrastructure: FirstLife platform.
T6	Contribution: Open calls definition and management, impact assessment, sustainability and entrepreneurship support & training, data and ethics and social inclusion support and training. Leads WP 2 and WP 5. Infrastructure: platform for open call management, softwares for collaborative working, survey development and distribution, software for data analysis and visualisation.
CMMI	Contribution: Scientific knowledge support & training, ecosystem building and animation, scientific communication, engagement with institutional / policy processes. Lead WP 4. Infrastructure: Diving equipment for underwater surveys, specialised cameras for visual data collection, laboratory equipment for biodiversity analysis, observatories for real-time collection of water column measurements
EPICA	Contribution: To ensure the art-science collaboration, co-creation and participatory arts methodologies training and support, design and management of the accelerator, CCIs sector engagement. Leads WP 3. Infrastructure: Venue located in the Badalona port.
RegNet	Expert: Communication, scientific dissemination, performing arts sustainability and exploitation. Contribution: Communication and dissemination, support and training on communication, sustainability and exploitation. Leads WP6 and task 5.4 Infrastructure: N/A
Raw News	Contribution: Dissemination and communication, network building. Lead task 6.4 and support the other tasks of WP6 Infrastructure: Professional video and photo cameras and broadcast, drones, underwater video and photo camera, professional editing equipment, sound recording and lights equipment, Bgan IP satellite system and 5G bundles, sailing Boat Lab.

## ParArt4OW Qualifying points



- The **health of our oceans and inland water is a major concern** in global environmental governance.
- **strengthening the emotional attachment** to the sea and waters
- PartArt4OW creates an experimentation space, a **sandbox**, in which artists and teams from the creative sectors are supported in developing inter-sectoral, participatory projects.
- focuses on **participatory art and creative processes**
- supports **19 transectorial and transdisciplinary-inspired artistic and creative projects selected in three open calls**. to support changes towards sustainability, ocean literacy, and awareness raising to strengthen maritime resilience.
- setting up a **support and accelerator program for PAIs**, which provide them with a dedicated programme of mentoring, training, and outreach
- fostering networking and knowledge sharing among different stakeholders via online dedicated mutual learning exercises and the develop of a toolkit
- showcasing the results of the supported initiatives in 3 Festivals
- PartArt Sailing Lab (symbolically and physically) cruise the sea, visually document ongoing activities, connects coastal communities to document people’s attachment to the sea, and communities’ engagement with ocean health, through artistic and creative elaborations, and carry the project further

## PartArt4OW

### *PAIs*

PartArt4OW select and supports initiatives that see the tight cooperation of scientists, creative sectors, citizens, associations, institutions, and businesses to increase awareness on the challenges and pressures faced by the ocean and inland waters, while mobilising citizens and stakeholders for the protection and restoration of oceans and inland waters.

All PAIs are be expected to:

- engage citizens from a diverse background in a variety of ways not only as spectators/audience members;
- combine participatory art with scientific rigourness;
- actively promote, share and communicate the outputs of their initiatives to relevant stakeholders in science, policy, and the public;
- raising interests and commitment for ocean and waters management and engage with actors of the blue research and innovation sectors
- Deliver fully sustainable and cultural initiatives, adhere to the Climate Pact Pledge and contribute to the European Bleu Camping

## ParArt4OW Rationale

### WPI. Project Coordination and Management



WP2. ParArt4OW  
Framework - Open calls



WP3. ParArt4OW  
support and  
Accelerator program



WP4. Stakeholders  
engagement and  
ecosystem building

### WP5. Impact Assessment

### WP6. Communication and Dissemination

- ParArt4OW is a 30-month project
- In the first 5 months of the project (WP1), ParArt4OW finetunes the technical, scientific and coordination measures to launch the first Open Call. In parallel it:
  - 1) refines its communication, dissemination and exploitation plan and set up all the needed communication channels (WP6);
  - 2) enlarge the project network and engage key stakeholders in the open call challenge definition (WP4).
- Once all materials/channels are prepared, the open call process begins to recruit and select PAIs that PartArt4OW supports via a dedicated accelerator program (WP3).
- While helping the PAIs in developing their initiatives, we continue the work of ecosystem building, we analyse the challenges faced by the stakeholders doing art-science collaboration on the topic of water and ocean and co-design a toolkit enabling other to do PAIs-live projects (WP4). PAIs are supported in maximising their impacts showcase their results in dedicated Festivals with key stakeholders so to supporting their uptake and scaling up.
- All PAIs are assessed in terms of outputs and impacts (WP5) and related data are made available on the project website and in a dedicated report.

## PartArt4OW

### Building stones

- Open Calls

M1	M2	M3	M4	M5	M6	M7	M8	M9	M10	M11	M12	M13	M14	M15	M16	M17	M18	M19	M20	M21	M22	M23	M24	M25	M26	M27	M28	M29	M30			
Setup					OC1			Selection		Negotiation		Accelerator																				
									Setup		OC2		Selection		Negotiation		Accelerator															
														Setup		OC3		Selection		Negotiation		Accelerator						Wrap-up				

- Accelerator Program (1) Ideation and conceptualization (2) Implementation (3) Exhibition)

M1	M2	M3	M4	M5	M6
Ideation and conceptualization Hands-on collaborative workshop	Implementation Networking and personalised support and mentoring				Exhibition Festival and side-events
Tracking and monitoring					

- Ecosystem building and mutual learning exercise (Stakeholder mapping; pan-European survey; mutual learning exercise)
- Toolkit
- Sailing Lab
- Assessing the impact of PAIs and PartArt4OW



# ParArt4OW

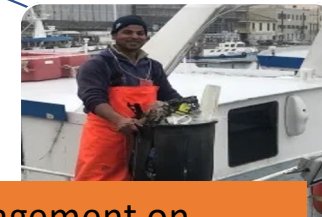
## Potential PAIs



Supporting local blue economies



Improvement of marine literacy



Engagement on of local communities marine pollution



Extemporary artistic performances



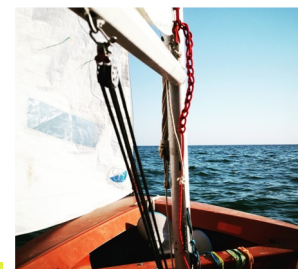
Students presenting their work



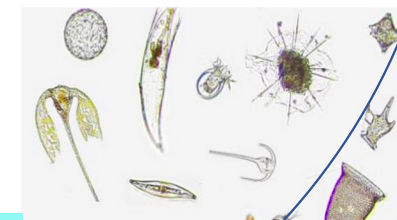
Art Exhibitions



Data gathering and sharing



Promoting reuse and recycle



Scientific monitoring